

Coral Shopping Center

2202 & 2216 EAST OAKLAND PARK BOULEVARD | SW CORNER OF US # 1 & EAST OAKLAND PARK BOULEVARD
FORT LAUDERDALE, FL 33306

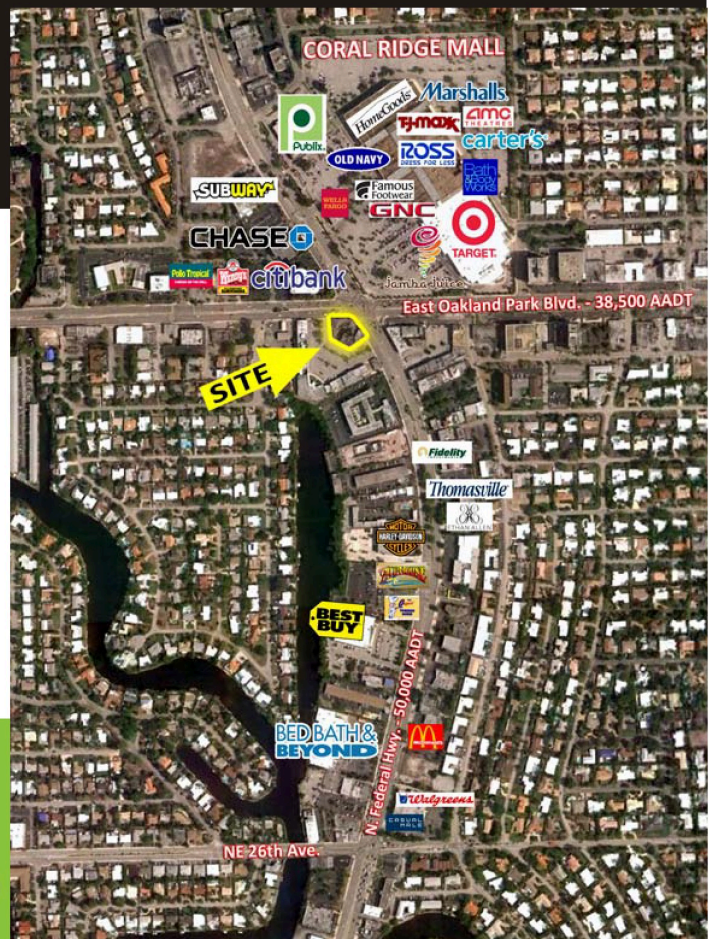
Property Overview

- Population:
 - 1 Mile - 15,341
 - 3 Miles - 126,233
 - 5 Miles - 264,031
- Average HH Income:
 - 1 Mile - \$83,219
 - 3 Miles - \$67,927
 - 5 Miles - \$65,309
- Median Age:
 - 1 Mile - 52
 - 3 Miles - 45
 - 5 Miles - 43



Property Highlights:

Spave available from 1,313 sf to 2,626 sf
Prime corner space and end cap space available!
One of the busiest intersections in S. FL! 90,000 ADT
Directly across the street from the Coral Ridge Mall!
Exterior is being completely renovated



John F. Cohane, SCLS

Licensed Real Estate Broker

Tel: 954.561.7714

Cel: 954.647.1929

Fax: 954.561.2214

Email: John@CohaneRealtyAdvisors.com

www.cohanerealtyadvisors.com

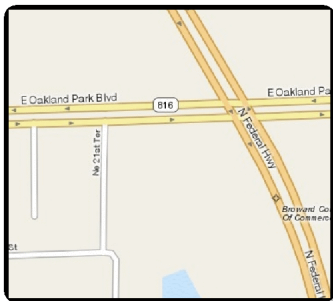
2216 OAKLAND, LLC.

LOTS 23, 24, 25, 28 AND 32

CORAL SHOPPING CENTER

PLAT BOOK 29, PAGE 30, B.C.R.

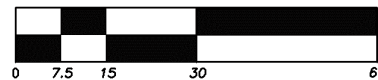
2216 E. OAKLAND PARK BLVD., FT. LAUDERDALE, FL. 33306



LOCATION MAP
NOT TO SCALE



SCALE: 1" = 30'



GRAPHIC SCALE

OAKLAND PARK BOULEVARD

100' RIGHT-OF-WAY (PER PLAT)

